

Spinnaker



Spinnaker is the biggest graphic carrier in the range with a graphic area of up to 6m² (236.22^m²) single or double sided. It's the ideal promotional solution for outdoor events, advertisements, exhibitions and

public areas such as airports and shopping malls. Several units can be linked together as a seamless wall to make an even bigger impact.

features & benefits

- Indoor or outdoor, single or double sided banner system
- Individual units can be joined together
- Telescopic pole for adjustable graphic height up to a maximum of 2400mm approx (94.5")
- Quick to assemble
- 2500mm (98.42") approx graphic width
- Hollow feet for water or sand weighting for total stability

hardware specifications

Width	
Max. Height (approx.)	118" (3000mm)
Depth	
Base Tank (approx.)	31.5" x 9.45" (800mm x 240mm)
Weight (approx.)	29.5 lbs (13.4 kg)
Each base tank holds approx. 7.4 U.S. gallons of water (28 liters).	

graphic specifications

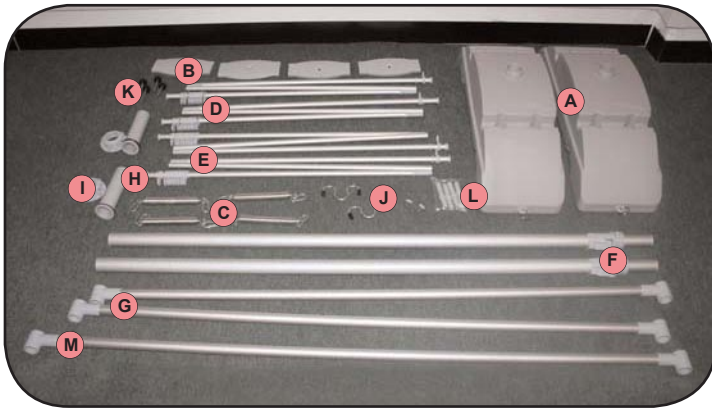
Width	98" (2489mm)
Height	45" and up to 98" (1143mm and up to 2489mm)
Recommended Substrate: Light weight outdoor banner material (solid or mesh type substrates) and or dye sublimated fabrics. Graphic requires #3 grommets. (For more details please see back page.)	

additional info

Package 1 (Base Set) shipping dimensions:			
length	width	depth	weight
35" (889mm)	21" (534mm)	12" (305mm)	21 lbs.
Package 2 (Pole Set) shipping dimensions:			
length	width	depth	weight
70" (1778mm)	7" (178mm)	5" (127mm)	18 lbs.
Availability: Aluminium and molded grey plastic base.			
Bag Material:			
Accessories: To create a seamless wall of graphics, complete sets need to be purchased.			

We are continually improving and modifying our product range and reserve the right to vary the specifications without prior notice. All dimensions and weights quoted are approximate and we accept no responsibility for variance. E&OE. See Graphic Templates for graphic bleed specifications.

Spinnaker Assembly Instructions



Kit includes:

- 2 x base tanks (A)
- 4 x base covers (B)
- 4 x base springs (C)
- 2 x top bungee poles (D)
- 2 x bottom bungee poles (E)
- 2 x telescopic support poles (F)
- 2 x base poles (G)
- 2 x hollow base tubes (H)
- 2 x base screws (I)
- 2 x graphic support hooks (J)
- 2 x telescopic support pole screws (K)
- 4 x spare bungee ends (L)
- 1 x top support pole (M)



1
Unscrew the 4 base screws from the base tanks and put to one side.



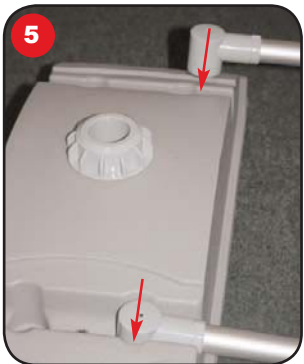
2
Lift off the 4 base covers and put to one side.



3
Unfasten the base screws from the base tank.



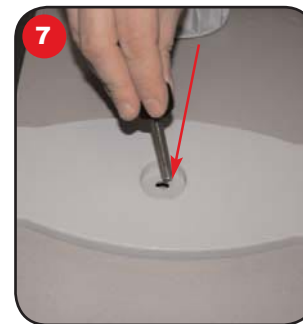
4
Remove the base tubes from the base tank. Fill each tank with water or sand, then refit the base tubes and fasten the screws.



5
Take the 2 base poles and slot into each base tank. Repeat for the 2nd tank.



6
Refit the 4 base covers.



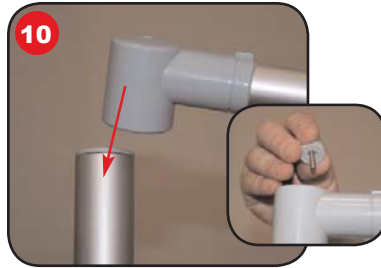
7
Fasten the 4 base screws to secure.



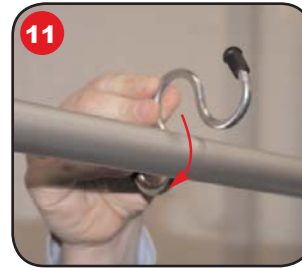
8
Unfasten the screw from the top of each telescopic support pole and put to one side.



9
Take a telescopic pole and insert into the base tank. Repeat for the 2nd tank.



10
Fit the top support pole over the top of each telescopic pole and secure with screws removed previously.

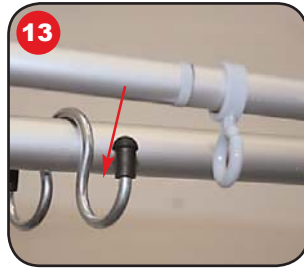


11
Place the 2 graphic support hooks over the top support pole.

Spinnaker Assembly Instructions



Assemble 1 top bungee pole and 1 bottom bungee pole.



Rest the top bungee pole (pole WITHOUT metal rings) onto each support hook.



Take the top horizontal edge of the graphic and attach each eyelet onto the plastic hooks on the top bungee pole. Space out evenly.



Attach the base springs to each base tank ring.



Attach the other end of the base spring to the bottom bungee pole ring.



Take the bottom horizontal edge of the graphic and attach each eyelet onto the plastic hooks on the bottom bungee pole. Space out evenly. For double sided display repeat steps 14 to 17 for the 2nd graphic.



Unlock one telescopic support pole and raise up the graphics to the desired height.



Lock the telescopic support pole into place. Repeat for the 2nd support pole.

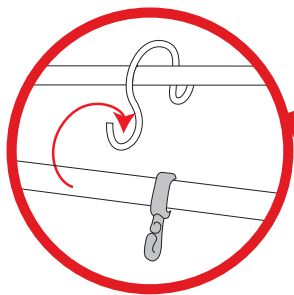
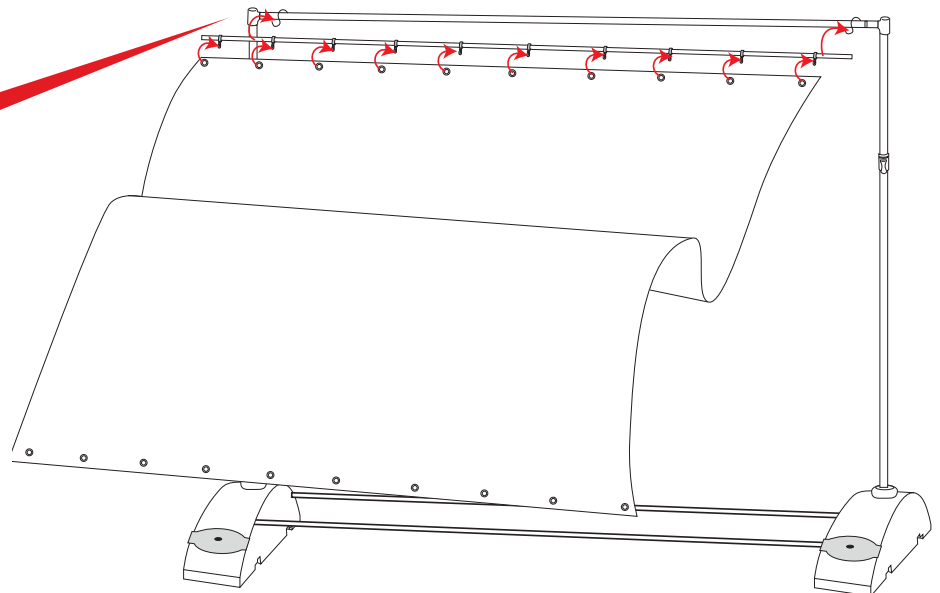
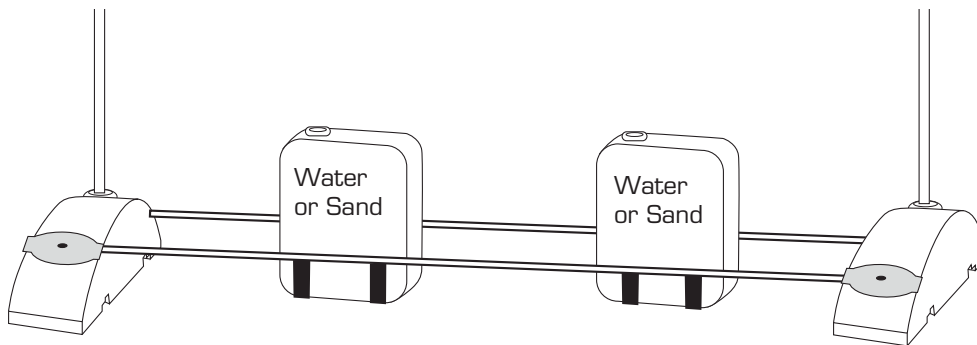
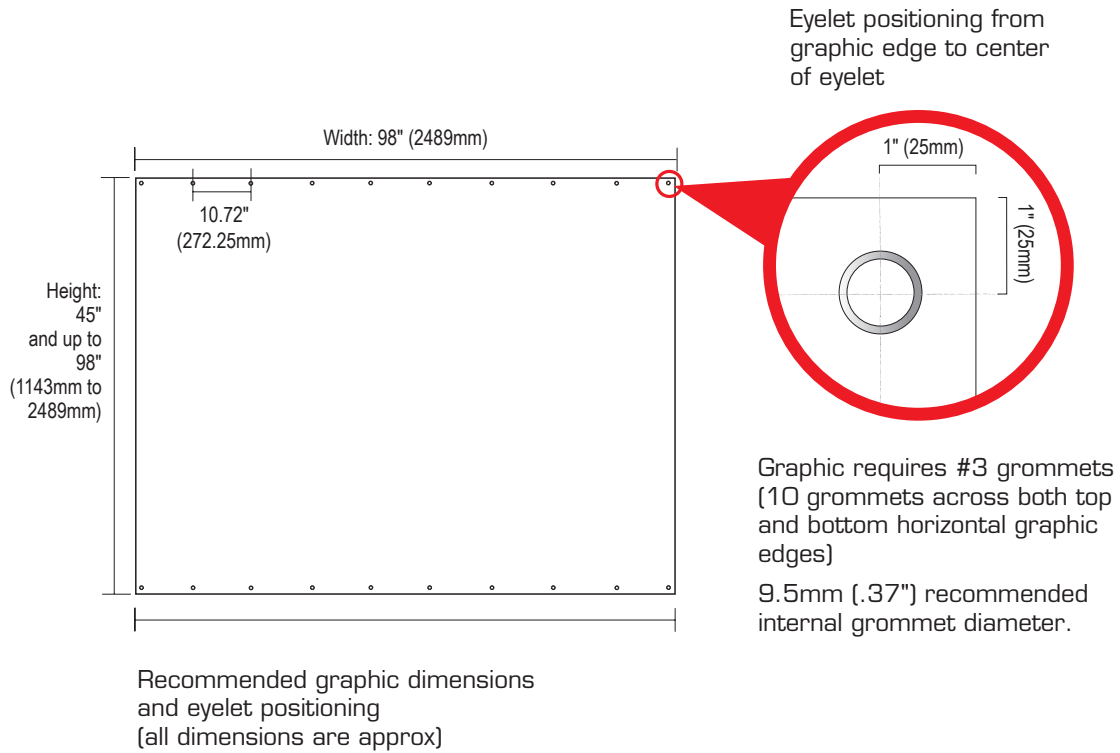


Illustration to show how graphic fits to the frame, each graphic eyelet attaches to hooks on the horizontal bungee poles.



Spinnaker Assembly Instructions



Spinnaker is suitable for indoor or outdoor use. However if used in strong winds extra weighting may be necessary. Attach straps (not included) to the base poles to hold additional weights (not included).

Spinnaker Bags



Shown above: disassembled Spinnaker base parts and Wind Dancer bag.



Place parts in bag as shown



Close bag by zipping



Close Velcro handles



Shown above: disassembled Spinnaker poles and Wind Dancer pole bag.



close bag by zipping



Close Velcro handles